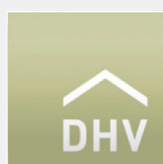
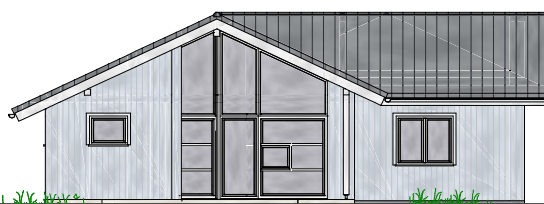
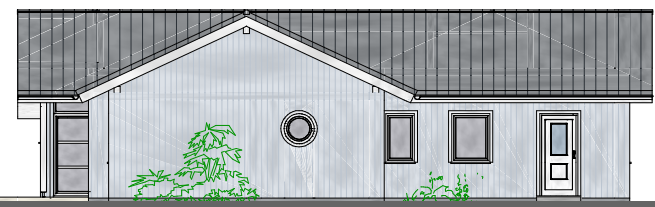
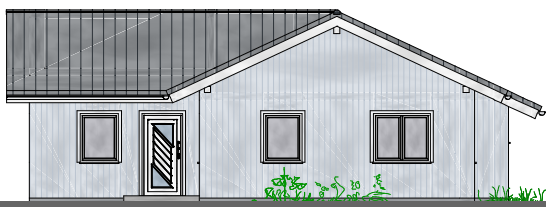
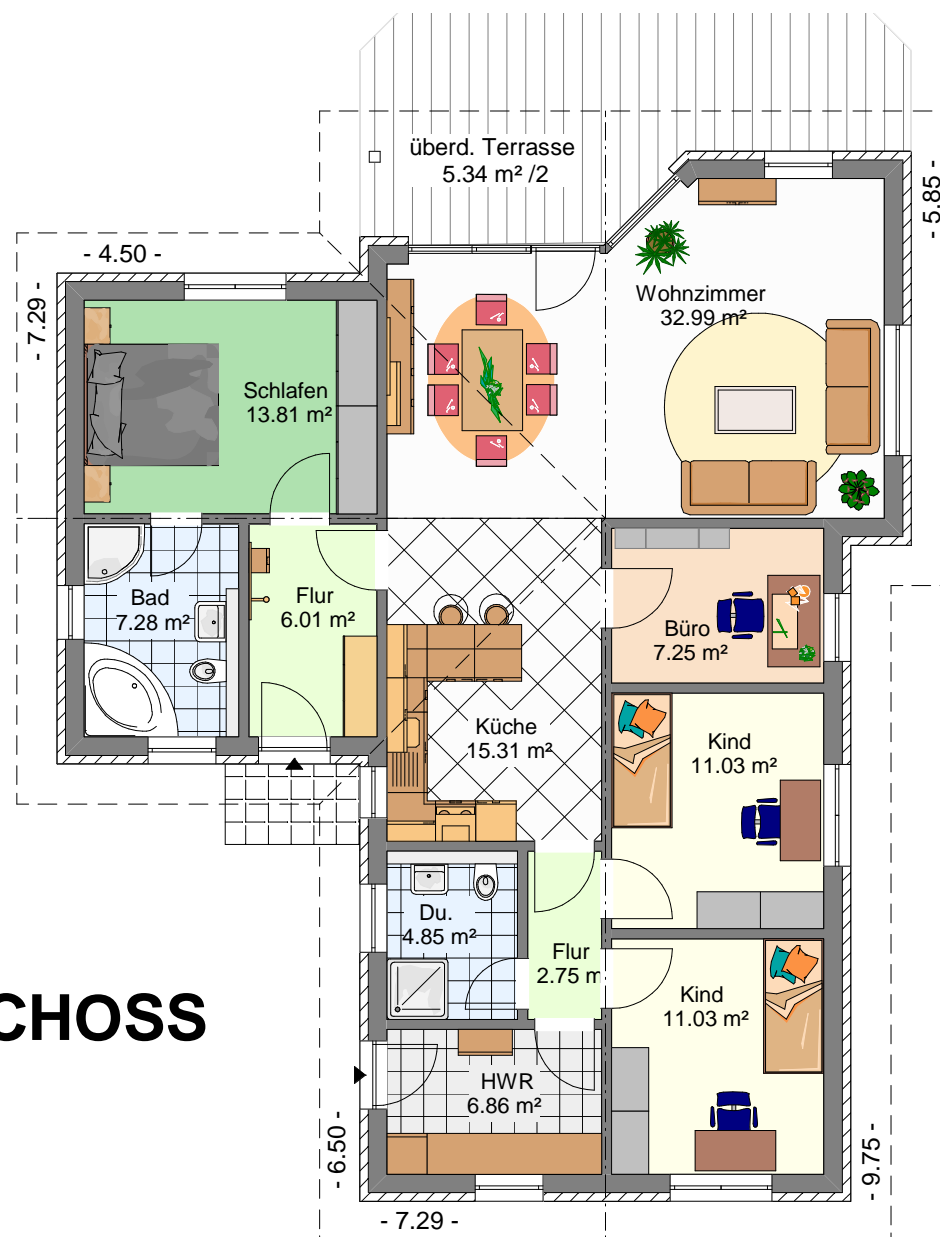


# HOLLERN



<b>Wohnfläche ges.:</b>	<b>121,84 m<sup>2</sup></b>
überbaute Fläche:	151,79 m <sup>2</sup>
<b>Wohnfläche EG:</b>	<b>119,17 m<sup>2</sup></b>
überdachte Terrasse:	5,34 m <sup>2</sup> /2
<b>Bodenraum DG:</b>	<b>16,84 m<sup>2</sup></b>
Dachneigung:	25 Grad

## ERDGESCHOSS



Kurt Buck Baugesellschaft GmbH & Co. KG  
Neuendamm 95 • 27432 Bremervörde-Mehedorf  
Tel.: 04769 - 225 • info@kurtbuck.de  
[www.kurtbuck.de](http://www.kurtbuck.de)